

PRIVATE EQUITY SERVICES

A better way to administer PE funds

For more than 50 years, the Citco Group of Companies have offered high quality administration services to alternative investment firms. Citco delivers these services to private equity firms by drawing on an industry-leading private equity technology platform and leveraging professionals that come from the private equity industry.

CITCO UNDERSTANDS PRIVATE EQUITY

Capital call/distribution notice processing, multiple fund closes, complex waterfall calculations, tiered management fees, investor-friendly structures and investments in both liquid and illiquid securities are core elements of the language we speak.

Of our \$1 Trillion in assets under administration, approximately \$300bn comes from our private equity and real estate business.

CITCO IS INDEPENDENT

The Citco Group of Companies stand out as privately held market-leading, independent administrators. We have a global network with 6,200 staff across nearly 60 offices.

CITCO IS FOCUSED & DEDICATED

Our senior management team averages more than 30 years of experience. Clients are supported by dedicated teams that are fully versed in funds' activities and familiar with complex legal structures.

CITCO TECHNOLOGY IS BEST OF BREED

Our combination of proprietary and best-in-breed vendor solutions make reporting and data access flexible and fully transparent.



Investment manager overview: the dashboard landing page illustrates key manager KPIs and provides drill-down to the fund and investor allocations

CITCO WATERFALL™ ASSISTS WITH CARRIED INTEREST COMPUTATIONS

Citco Waterfall is a proprietary tool created by Citco to assist with calculation of the carried interest associated with traditional close-ended fund vehicles (a.k.a., realised and unrealised waterfalls). The system is designed to offer the highest levels of flexibility in waterfall calculation methodology, data in-take/out-take, and the ability to report on the results at all stages of the calculation.

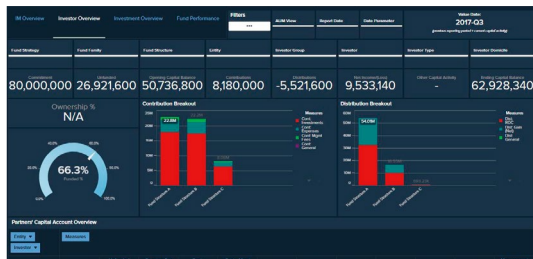
KEY FEATURES OF CITCO WATERFALL

- Source system agnostic
- Unlimited tiers/flexible tier arrangement
- Intuitive waterfall setup dashboard
- Visual data flow
- Investor’s override
- Output transactions per tier

We deliver a complete administration solution

Key Services include:

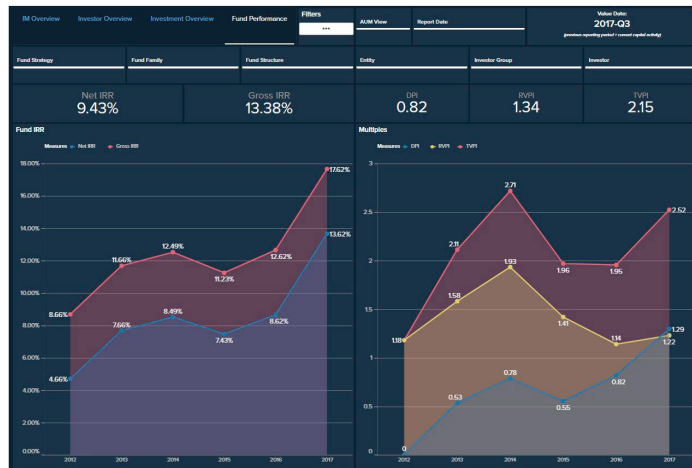
- maintaining records
- processing investment transactions
- waterfall calculation services
- preparing IRR and other performance metrics
- processing capital calls and distributions
- treasury cash management
- financial statement reporting
- ILPA reporting-automation
- tax and regulatory services
- SPV administration: including accounting, establishing domiciles, and portfolio governance across jurisdictions



Investor overview: consolidated partner capital statement down to the investor allocation. This provides transparency into the GL components, including a full capital breakout



Investment overview: comprehensive view of SOI and investment realizations by GL component, plus investment exposure by region/country and industry



Fund performance view: IRR and multiple calculations at the fund level with investor pierce-through, plus historical trend analysis from fund inception

CONTACT US

US
 Jeffrey Rosen
 T +1 (201) 793 5572
 E jerosen@citco.com

EUROPE & ASIA
 Niall Fagan
 T +65 6571 1702
 E nfagan@citco.com

Citco DISCLAIMER

The information contained in this document is marketing material and for informational purposes only. The information contained in this document is presented without any warranty or representation as to its accuracy or completeness and all implied representations or warranties of any kind are hereby disclaimed. Recipients of this document, whether clients or otherwise, should not act or refrain from acting on the basis of any information included in this document without seeking appropriate professional advice. The provision of the information contained in this document does not establish any express or implied duty or obligation between Citco and any recipient and neither Citco nor any of its shareholders, members, directors, principals or personnel shall be responsible or liable for results arising from the use or reliance of the information contained in this document including, without limitation, any loss (whether direct, indirect, in contract, tort or otherwise) arising from any decision made or action taken by any party in reliance upon the information contained in this document.
 © The Citco Group Limited, February 2019

The Citco Group Limited is the indirect parent of a network of independent companies. The Citco Group Limited provides no client services. Such services are provided solely by the independent companies within the Citco group of companies (hereinafter, the “Citco group of companies”) in their respective geographic areas. The Citco Group Limited and the Citco group of companies are legally distinct and separate entities. They are not, and nothing contained herein shall be construed to place these entities in the relationship of agents, partners or joint venturers. Neither Citco Group Limited nor any individual company within the Citco group of companies has any authority (actual, apparent, implied or otherwise) to obligate or bind The Citco Group Limited in any manner whatsoever.